

**Important Note:**

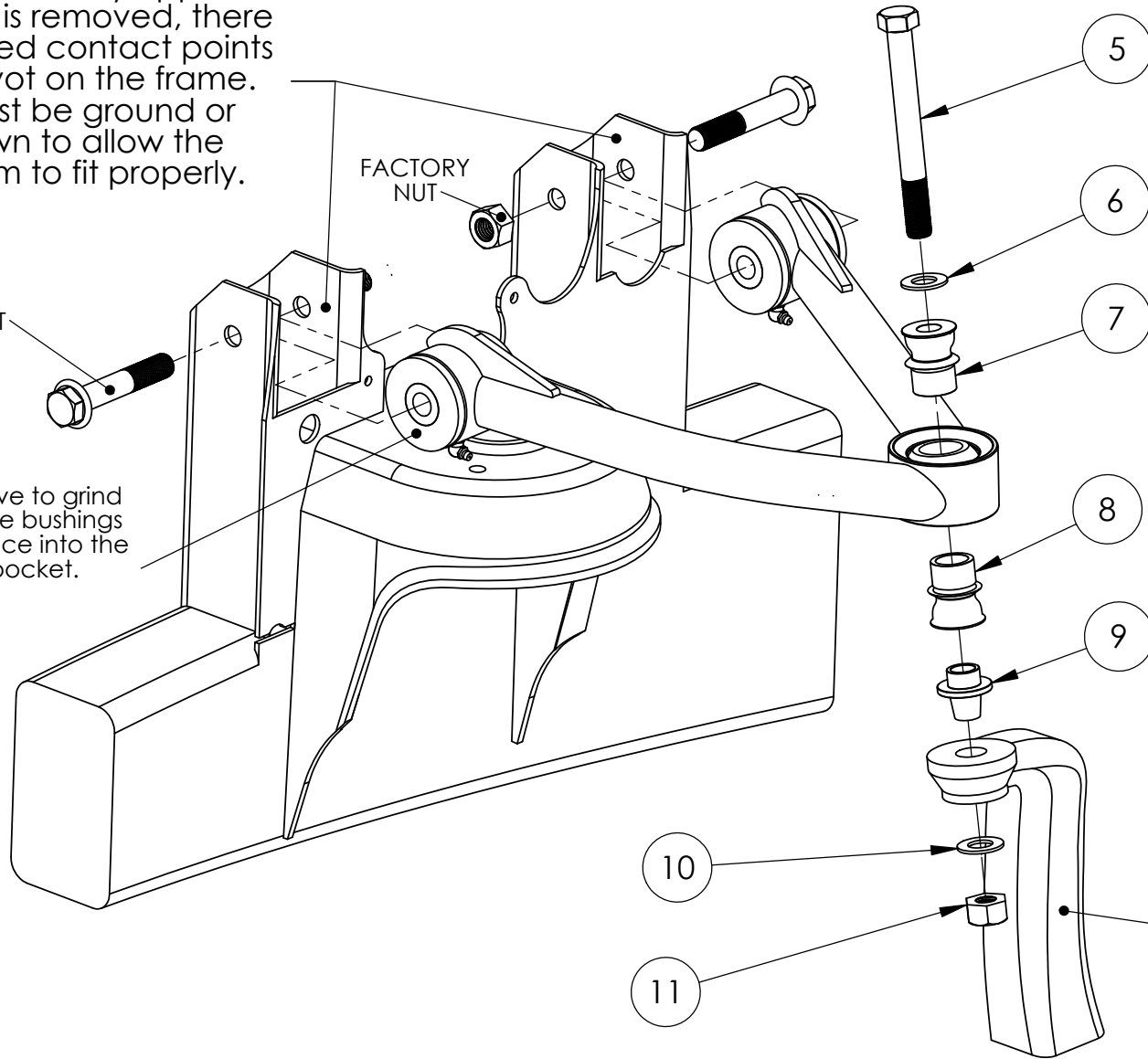
Once the factory upper control arm is removed, there are two raised contact points in each pivot on the frame.

These must be ground or sanded down to allow the control arm to fit properly.

FACTORY BOLT

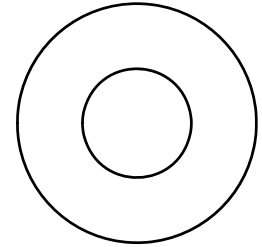
FACTORY NUT

You may have to grind the hat of the bushings to fit/clearance into the factory pocket.

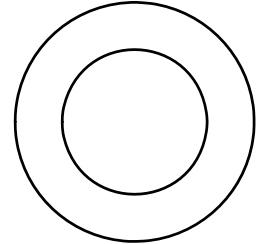


**IMPORTANT NOTE:**  
During assembly, upper & lower spacers are specific. Failure to follow these instructions will result in damage of all components.

Upper spacer has 9/16" hole



Lower spacer has 3/4" hole



\*LEFT SIDE OF TRUCK SHOWN. SOME ITEMS NOT SHOWN FOR CLARITY.