

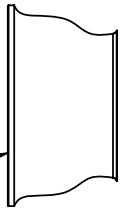
INSTALLATION INSTRUCTIONS

96-04 TACOMA PRERUNNER/4WD U.C.A.
00-06 TUNDRA 2WD/4WD U.C.A.

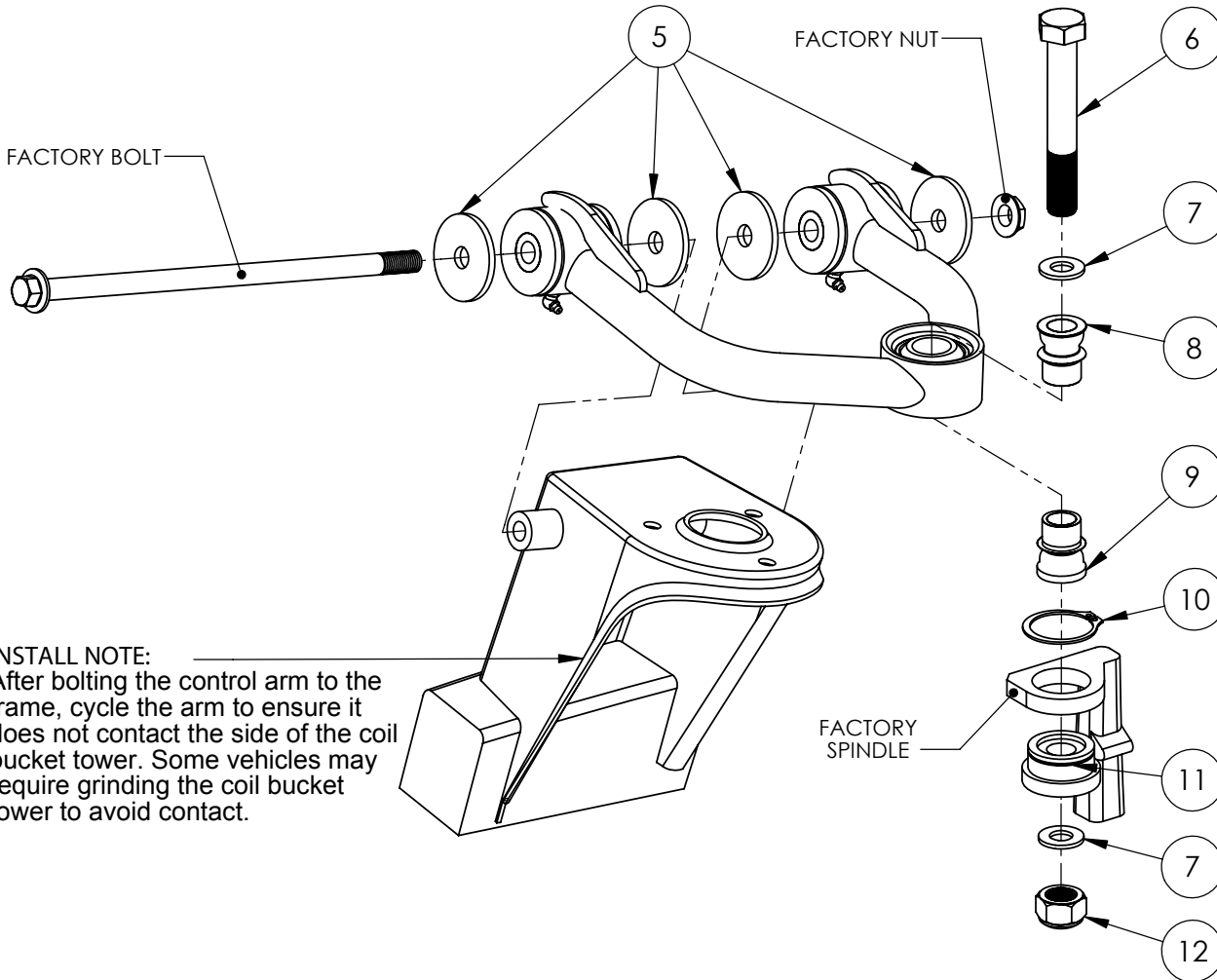
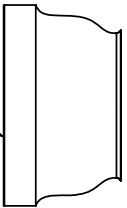
DATE: 5/8/2007
REV.: 01
SCALE: N.T.S.
PAGE: 3 OF 4
DRAWN: SW

IMPORTANT NOTE:
During assembly, upper & lower spacers are specific. Failure to follow these instructions will result in damage of all components.

Upper spacer is shorter



Lower spacer is taller



INSTALL NOTE:
After bolting the control arm to the frame, cycle the arm to ensure it does not contact the side of the coil bucket tower. Some vehicles may require grinding the coil bucket tower to avoid contact.

*LEFT SIDE OF TRUCK SHOWN. SOME ITEMS NOT SHOWN FOR CLARITY.